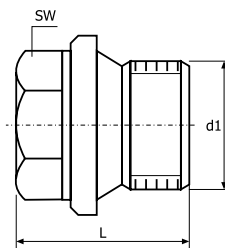


Złączki gwintowane

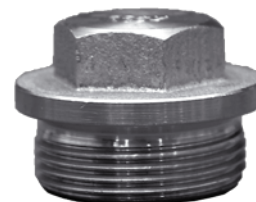
gwint BSP, ciśnienie PN10

NW	d1	SW	L1
6	1/8"	10 mm	17 mm
8	1/4"	13 mm	21 mm
10	3/8"	17 mm	21 mm
15	1/2"	19 mm	26 mm
20	3/4"	24 mm	30 mm
25	1"	27 mm	32 mm
32	1 1/4"	30 mm	33 mm
40	1 1/2"	30 mm	33 mm
50	2"	35 mm	40 mm
65	2 1/2"	83 mm	110 mm
80	3"	97 mm	125 mm
100	4"	114,3 mm	120 mm

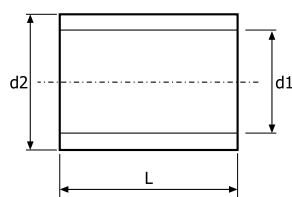


331

Korek sześciokątny
gwint zewnętrzny, cylindryczny, DIN 910.
Wykonanie stal 316.



NW	d1	d2	L
6	1/8"	14,0 mm	17 mm
8	1/4"	17,0 mm	25 mm
10	3/8"	21,3 mm	26 mm
15	1/2"	26,4 mm	34 mm
20	3/4"	31,8 mm	36 mm
25	1"	39,5 mm	43 mm
32	1 1/4"	48,3 mm	48 mm
40	1 1/2"	54,5 mm	48 mm
50	2"	66,3 mm	56 mm
65	2 1/2"	82,0 mm	66 mm
80	3"	95,0 mm	71 mm
100	4"	122,0 mm	83 mm



333

Mufa
gwint wewnętrzny, DIN 2986
Wykonanie stal 316 lub 304

