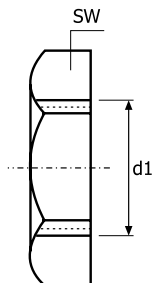


# Złączki gwintowane

## gwint BSP, ciśnienie PN10

### 327

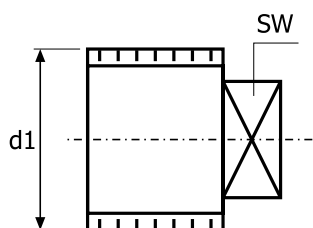
Nakrętka sześciokątna  
gwint wewnętrzny DIN 431.  
Wykonanie stal 316.



NW	d1	SW
6	1/8"	19 mm
8	1/4"	22 mm
10	3/8"	27 mm
15	1/2"	32 mm
20	3/4"	36 mm
25	1"	46 mm
32	1 1/4"	55 mm
40	1 1/2"	60 mm
50	2"	75 mm
65	2 1/2"	94 mm
80	3"	109 mm
100	4"	125 mm

### 329

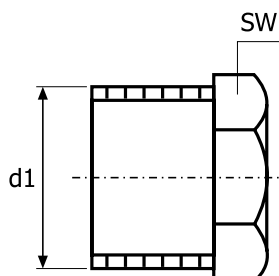
Korek 4-kątny  
gwint zewnętrzny.  
Wykonanie stal 316.



NW	d1	SW
6	1/8"	8 mm
8	1/4"	8 mm
10	3/8"	12 mm
15	1/2"	13 mm
20	3/4"	17 mm
25	1"	19 mm
32	1 1/4"	23 mm
40	1 1/2"	26 mm
50	2"	32 mm
65	2 1/2"	41 mm
80	3"	41 mm
100	4"	125 mm

### 330

Korek sześciokątny  
gwint zewnętrzny stożkowy.  
Wykonanie stal 316.



NW	d1	SW
6	1/8"	12 mm
8	1/4"	17 mm
10	3/8"	19 mm
15	1/2"	23 mm
20	3/4"	29 mm
25	1"	36 mm
32	1 1/4"	49 mm
40	1 1/2"	51 mm
50	2"	63 mm
65	2 1/2"	83 mm
80	3"	95 mm
100	4"	120 mm