

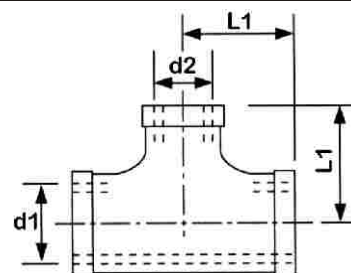
Złączki gwintowane

307 R

Trójnik redukujący gwint wewnętrzny DIN 2987.



NW	d1	d2	L1
8/6	1/4"	1/8"	21 mm
10/8	3/8"	1/4"	25 mm
15/10	1/2"	3/8"	28 mm
20/15	3/4"	1/2"	33 mm
25/20	1"	3/4"	38 mm
32/25	1 1/4"	1"	45 mm
40/32	1 1/2"	1 1/4"	50 mm
50/40	2"	1 1/2"	58 mm

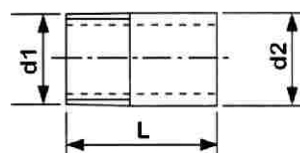


308

Nypel jednostronny gwint zewnętrzny DIN 2982.



NW	d1	d2	L1
6	1/8"	10,2 mm	30 mm
8	1/4"	13,5 mm	30 mm
10	3/8"	17,2 mm	30 mm
15	1/2"	21,3 mm	35 mm
20	3/4"	26,9 mm	40 mm
25	1"	33,7 mm	40 mm
32	1 1/4"	42,4 mm	50 mm
40	1 1/2"	48,3 mm	50 mm
50	2"	60,3 mm	50 mm
65	2 1/2"	76,1 mm	60 mm
80	3"	88,9 mm	70 mm
100	4"	114,3 mm	80 mm

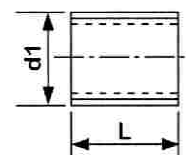


309

Nypel pełny gwint zewnętrzny DIN 2982



NW	d1	L1
6	1/8"	18 mm
8	1/4"	18 mm
10	3/8"	22 mm
15	1/2"	25 mm
20	3/4"	30 mm
25	1"	35 mm
32	1 1/4"	38 mm
40	1 1/2"	38 mm
50	2"	45 mm
65	2 1/2"	55 mm
80	3"	60 mm
100	4"	70 mm



310

Nypel dwustronny gwint zewnętrzny DIN 2982



NW	d1	d2	L1
6	1/8"	10,2 mm	40 mm
8	1/4"	13,5 mm	40 mm
10	3/8"	17,2 mm	40 mm
15	1/2"	21,3 mm	60 mm
20	3/4"	26,9 mm	60 mm
25	1"	33,7 mm	60 mm
32	1 1/4"	42,4 mm	80 mm
40	1 1/2"	48,3 mm	80 mm
50	2"	60,3 mm	100 mm
65	2 1/2"	76,1 mm	100 mm
80	3"	88,9 mm	120 mm
100	4"	114,3 mm	120 mm

