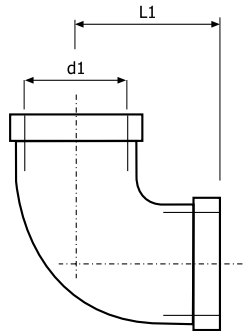


Złączki gwintowane gwint BSP, ciśnienie PN10

301

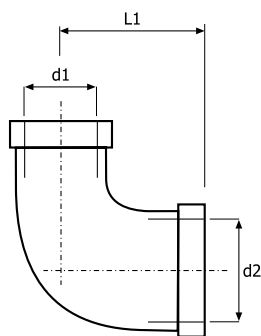
Kolano 90°
gwint wewnętrzny DIN 2987.
Wykonani e stal 316.



NW	d1	L1
6	1/8"	18 mm
8	1/4"	21 mm
10	3/8"	25 mm
15	1/2"	28 mm
20	3/4"	33 mm
25	1"	38 mm
32	1 1/4"	45 mm
40	1 1/2"	50 mm
50	2"	58 mm
65	2 1/2"	70 mm
80	3"	80 mm
100	4"	105 mm

301R

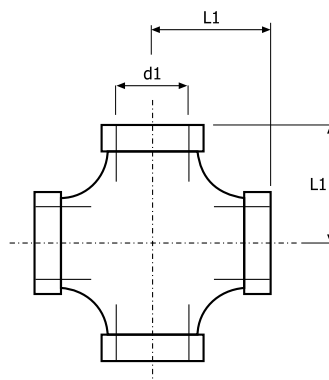
Kolano redukujące 90°
gwint wewnętrzny DIN 2987.
Wykonanie stal 316.



NW	d2	d1	L1
8/6	1/4"	1/8"	21 mm
10/8	3/8"	1/4"	25 mm
15/10	1/2"	3/8"	28 mm
20/15	3/4"	1/2"	33 mm
25/20	1"	3/4"	38 mm
32/25	1 1/4"	1"	45 mm
40/32	1 1/2"	1 1/4"	50 mm
50/40	2"	1 1/2"	58 mm

302

Czwórnik
gwint wewnętrzny DIN 2987.
Wykonanie stal 316.



NW	d1	L1
8	1/4"	21 mm
10	3/8"	25 mm
15	1/2"	28 mm
20	3/4"	33 mm
25	1"	38 mm
32	1 1/4"	45 mm
40	1 1/2"	49 mm
50	2"	57 mm

